



The SEAL® 62 Base laminator represents SEAL's latest offering to the rapidly growing digital display market. Ideal for mounting and laminating pressure-sensitive graphics up to 61", this machine represents a flexible package at an affordable price - without compromising its functionality.

The SEAL 62 Base is a pressure-sensitive machine with heat assist on the top roller that ensures superb results with a wide range of materials. Whatever the experience level of the operator, the SEAL 62 Base is easy-to-use, and will deliver genuine flexibility and high performance levels for the small to medium sized user.

Having great capability delivered at an

affordable price, the 62 Base is ideal for sign-makers. It provides the means for these users to finish their images and create more applications, which equals generating greater profitability. This laminator is also suitable for small to medium display based businesses who want to expand their range of applications. With the lower unwind/take-up option, you can encapsulate with pressure-sensitive films.

The SEAL 62 Base is ideal for producing a wide variety of display graphics

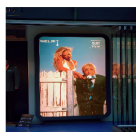
Rigid Indoor Displays



Rigid Outdoor Displays



Backlit Displays



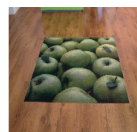
Pop-Up Displays



Roll-Up Displays



Floor Graphics



The SEAL 62 Base provides the following features:

Optimum performance

- 61" working width to handle a wide range of media
- Adjustable pressure and speed settings for maximum versatility
- 2" nip opening to cover a wide range of substrates
- 2" nip opening suitable for working with a sled for road signs
- Heat assisted top roller for superb lamination performance
- Maximum operating speed of 16.4'/minute
- Manual nip adjustment for precise operation
- Robust, free standing design

Ease of use

- Ergonomic control panel for ease of use
- Auto-grip shafts for user friendly webbing
- Swing-up feed table to facilitate easy set up
- Optional roll trough
- Optional leveling feet

Safety

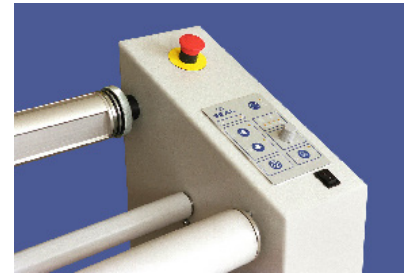
- Foot switch for hands free operation
- Self checking safety eyes for increased operator safety
- CE certified

SEAL® 62 Base

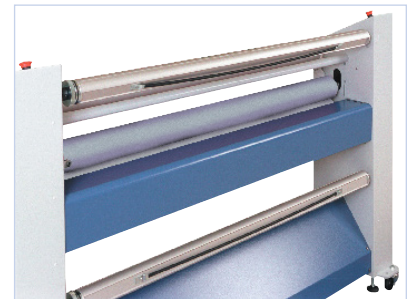
Technical Specifications

| | |
|---------------------------------|---|
| Maximum Working Width | 61" (1575 mm) |
| Maximum Speed | 16.4' /min. (5 m/min.) |
| Maximum Substrate Thickness | 2" (50 mm) |
| Maximum Roller Temperature | 104°F (40°C) |
| Roller Heating | Heat assisted top roller |
| Maximum Roll Weight | |
| Unwind | 85 lbs (38.5 kg) |
| Take Up | 35 lbs (15.9 kg) |
| Width | 82" (2090 mm) |
| Height | 52" (1326 mm) |
| Depth (excl. table) | 19" (483 mm) |
| Depth (incl. in-feed table) | 23" (590 mm) |
| Working Height | 35.5" (900 mm) |
| Net Weight | 530lbs. (240 kg) |
| Shipping Dimensions | |
| Width | 86" (2184 mm) |
| Height | 61" (1500 mm) |
| Depth | 30" (762 mm) |
| Shipping Weight | 661 lbs. (300 kg) |
| Electrical Requirements | 115 VAC 50/60 Hz, 15A NEMA 5-20 plug |
| SEAL 62 Base Part Number | |
| 115 VAC | 64338A |
| 230 VAC Europe | 64339A |
| Optional Equipment Part Numbers | |
| Roll Trough | 64614 |
| Autogrip Take Up | 64621 |
| Rear Power Take Up | 64623 |
| Leveling Feet (Set of 4) | 5406A |

Ergonomic control panel for ease of use.



Auto-grip shafts for user friendly webbing.



SEAL
7091 Troy Hill Drive
Suite B
Elkridge, MD 21075
U.S.A.

Tel: 800-257-7325
Fax: 800-966-4554



340191/04/2015

SEAL® is a registered trademark of ACCO BRANDS



Contact your local distributor:

www.sealgraphics.com